



# GHD GROUP

**Corporate office**

GHD INFRA DEVELOPER'S, 1718, Journalist colony,  
behind Sai Service maruti Showroom  
Porvorim - North Goa - 403521

**Site office**

S.No. 283/14, village - dhanva  
tivim, North Goa - 403502

**Tel:** 0832 241 32 99 **Mob:** 9822000835

**E-mail:** [info@ghdinfra.com](mailto:info@ghdinfra.com) | **Web:** [www.ghdinfra.com](http://www.ghdinfra.com)

## LUXURY LIVING IN THIVIM



*The Palm*  
TWIN VILLA'S

GOA



Goa is not just a place,

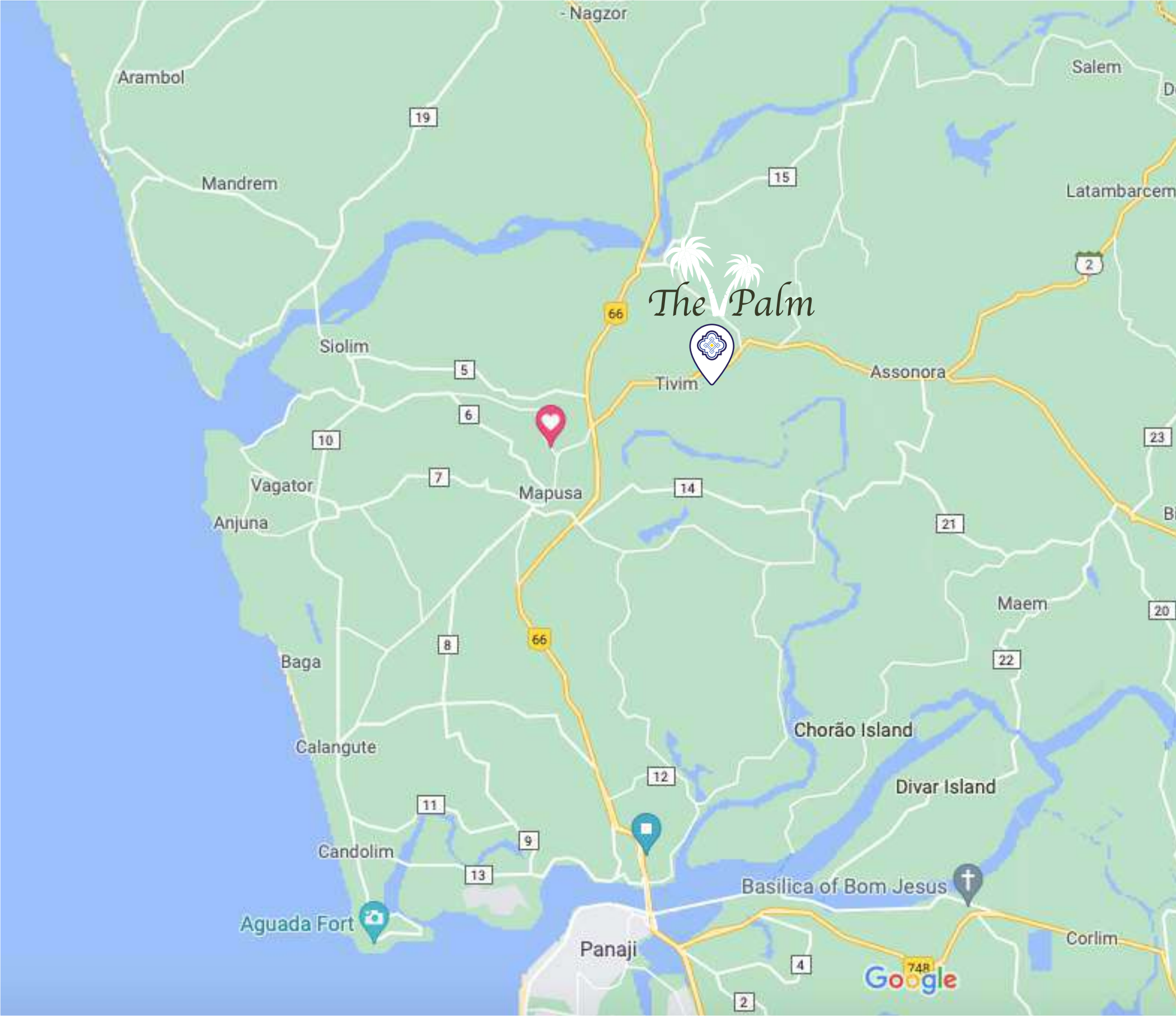
it's a way of living luxury green life.





## Dhanva THIVIM

Tivim pronounced Thivim, is a village in Nathivim in Bardez, in the North Goa district of Goa, India. It is an important gateway into North Goa as the home to the major railway station in North Goa. Tivim was also the ancestral village of the first global beauty queen of India, Ms. Reita Faria.



# Location

---

The palm is strategically located off Mapusa-Dodamarg highway, little bit away from noise of traffic and well connected with all tourism destinations of North Goa.

## NEAREST BEACHES

BAGA : 12KMS

CALANGUTE : 14KMS

ANJUNA : 11 KMS

MORJIM:- 12KMS

## HOTSPOTS

New International Airport Mopa: 20 Mins Drive

Mapusa Market: 10 Mins drive

Tivim Rly. Station: 5 Mins drive

Panaji: 20 Mins drive





## Launching the 1<sup>st</sup> edition of **Natural Living.**



Welcome to GHD the palm a castle in air with a plan to drive through nature for peace, health & prosperity. spread over 5500 Sq.Mtrs land, one of a kind concept Villa's in tivim, North Goa.

Conceived & designed with the purpose of creating a world-class living habitat, that is a celebration of life. GHD Infra Stratagems to come up with sequence of such lifestyle homes in Goa that foster life towards organic existence. We believe to transform the much preferred 'smart life' to simple natural green life that deliver tranquility in & out.



## THE PALM



The Palm is a HI-END SEMI-Furnished gated community Villa's thoughtfully designed to attain the perfect balance between modernity and natural living. Each floor offers an intimate living space and magnificent views that makes living at the palm even more enrich.

The Palm offers expansive floor living wrapped up impeccably, with the elements of nature.

Celebrate the joy of scopious views of the greens;

Celebrate the joy of elegant life.

**Come Celebrate Life at The Palm by GHD**



MASTER PLAN



DAY VIEW



3 BHK VILLA'S

This is an artists rendition and may undergo modifications.



DAY VIEW



INTERIOR VIEW

This is an artists rendition and may undergo modifications.

DAY VIEW



4 BHK VILLA'S

This is an artists rendition and may undergo modifications.

DAY VIEW



REAR POOL VIEW

This is an artists rendition and may undergo modifications.

DAY VIEW



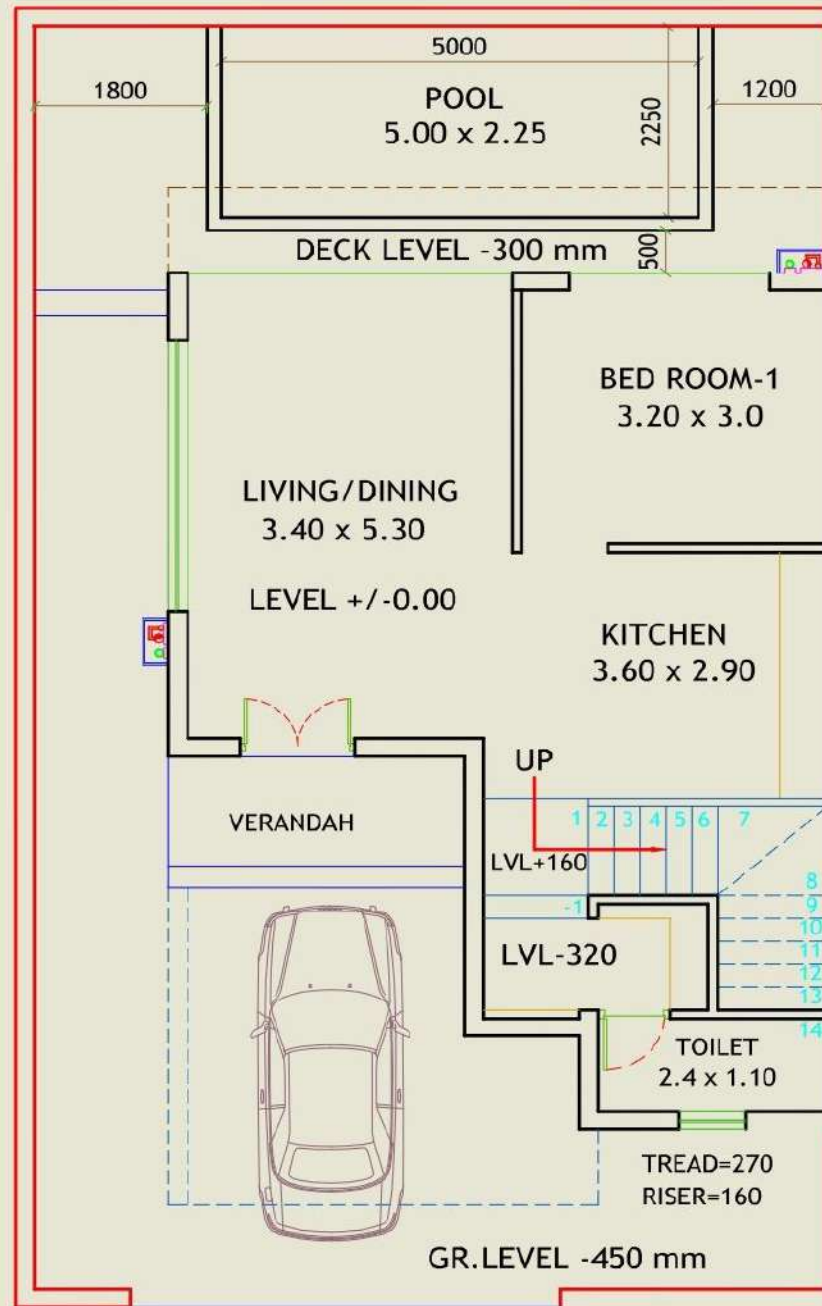
INTERIOR VIEW

This is an artists rendition and may undergo modifications.

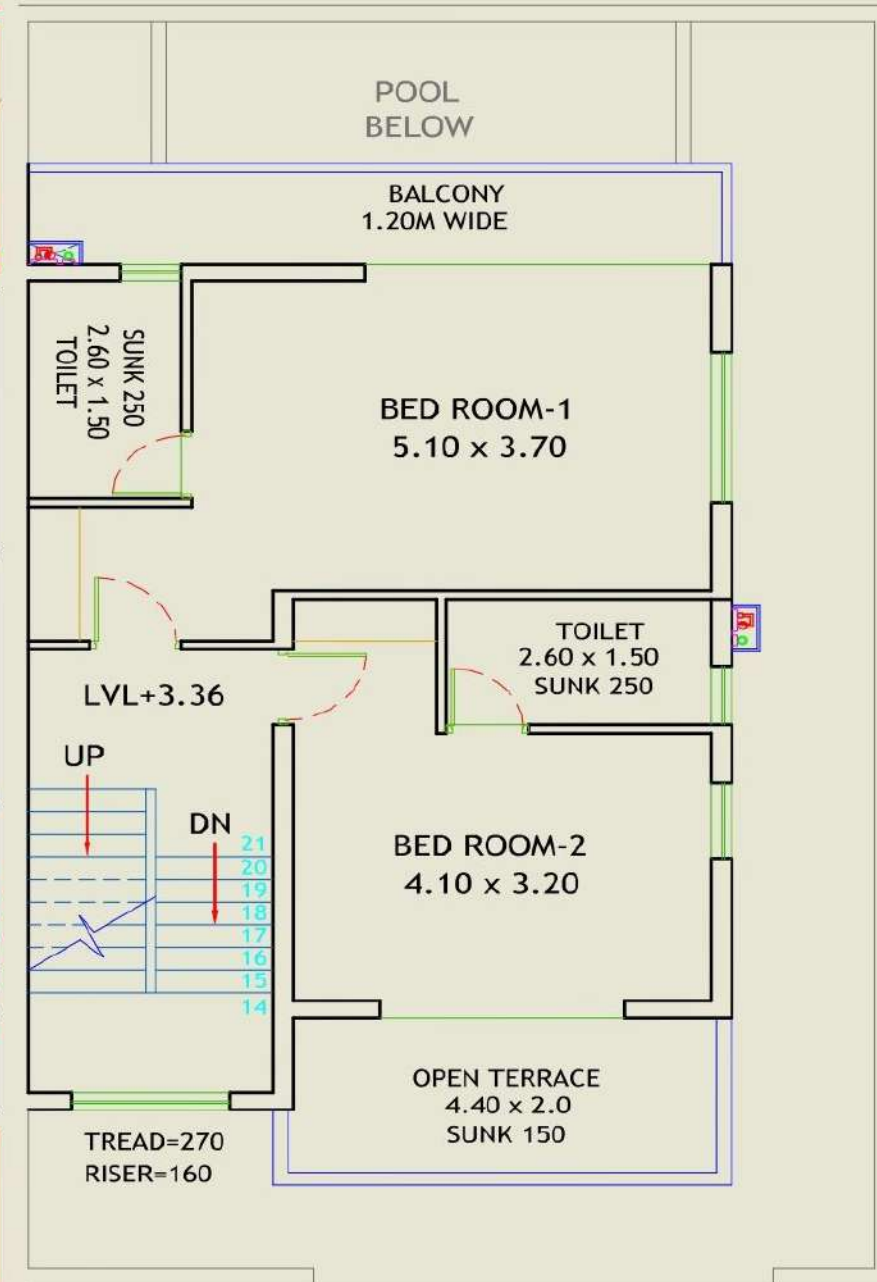
# FLOOR PLAN

## 3 BHK VILLA

141.58 Sq Mtr / 1524 Sq Ft



GROUND FLOOR PLAN



FIRST FLOOR PLAN

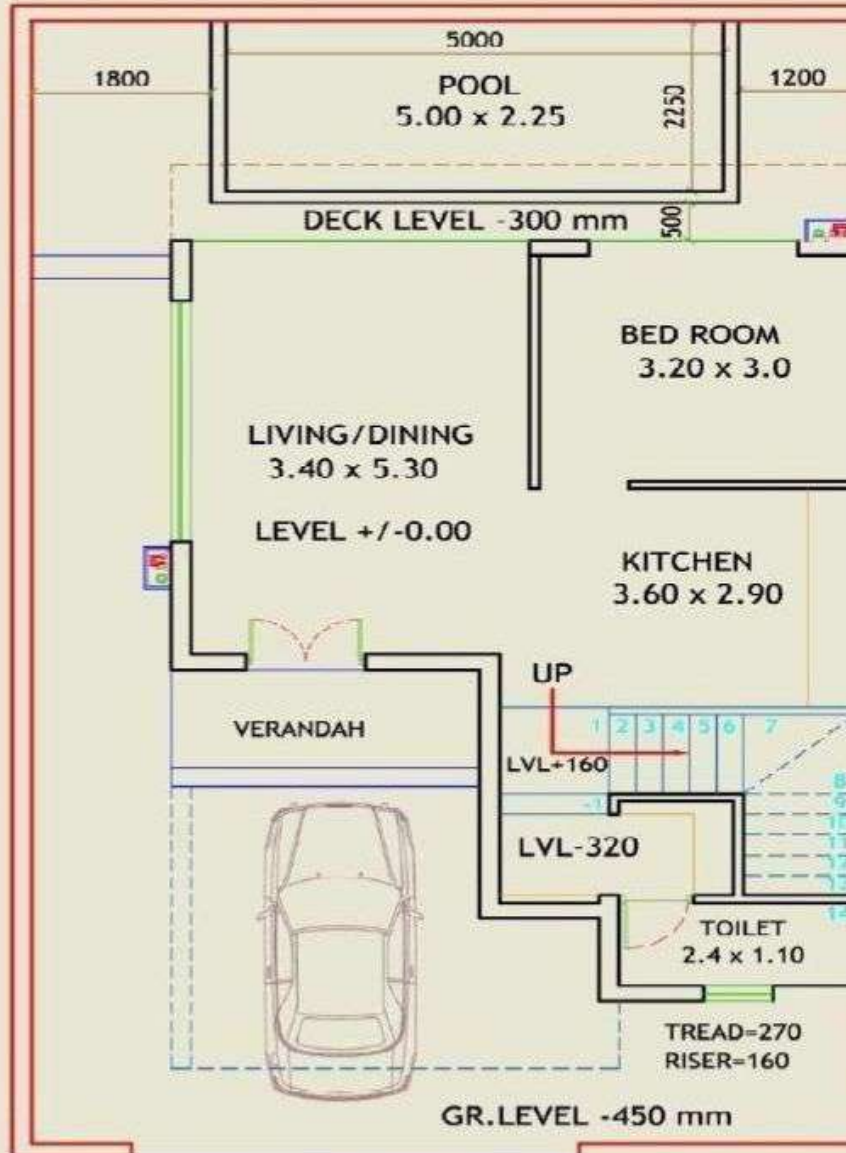
\*Subject to change as per the final measurement at the time of final offer of possession.



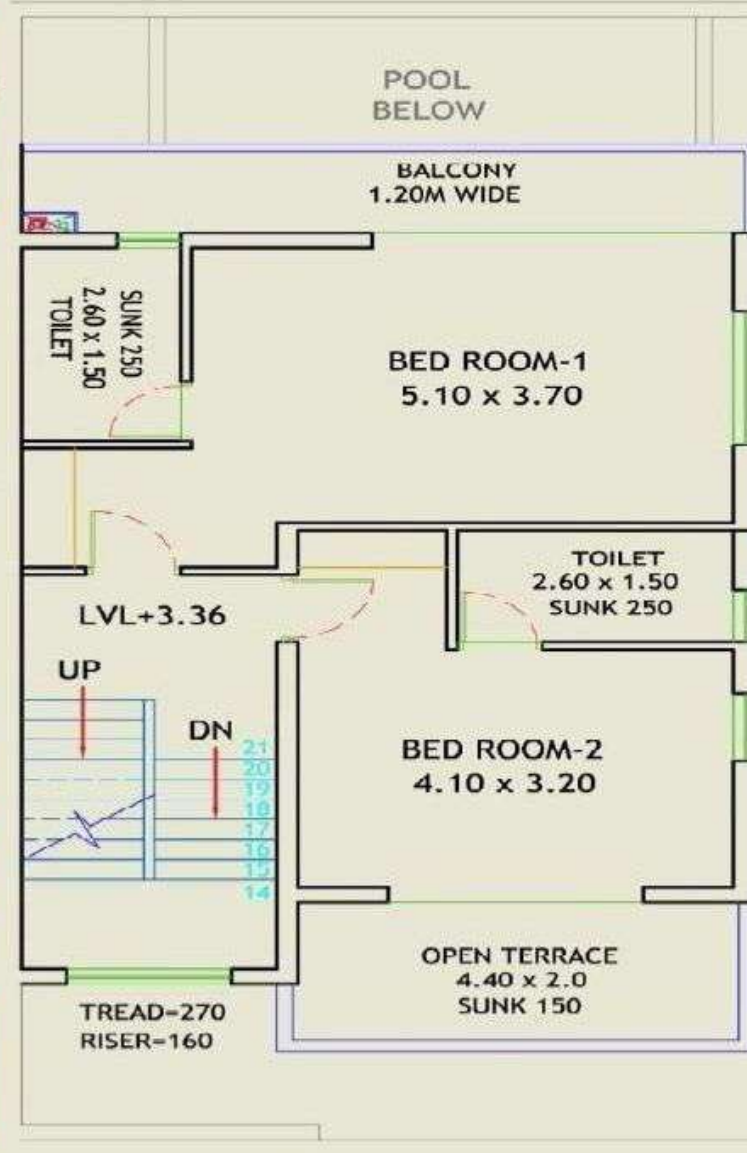
# FLOOR PLAN

## 4 BHK VILLA

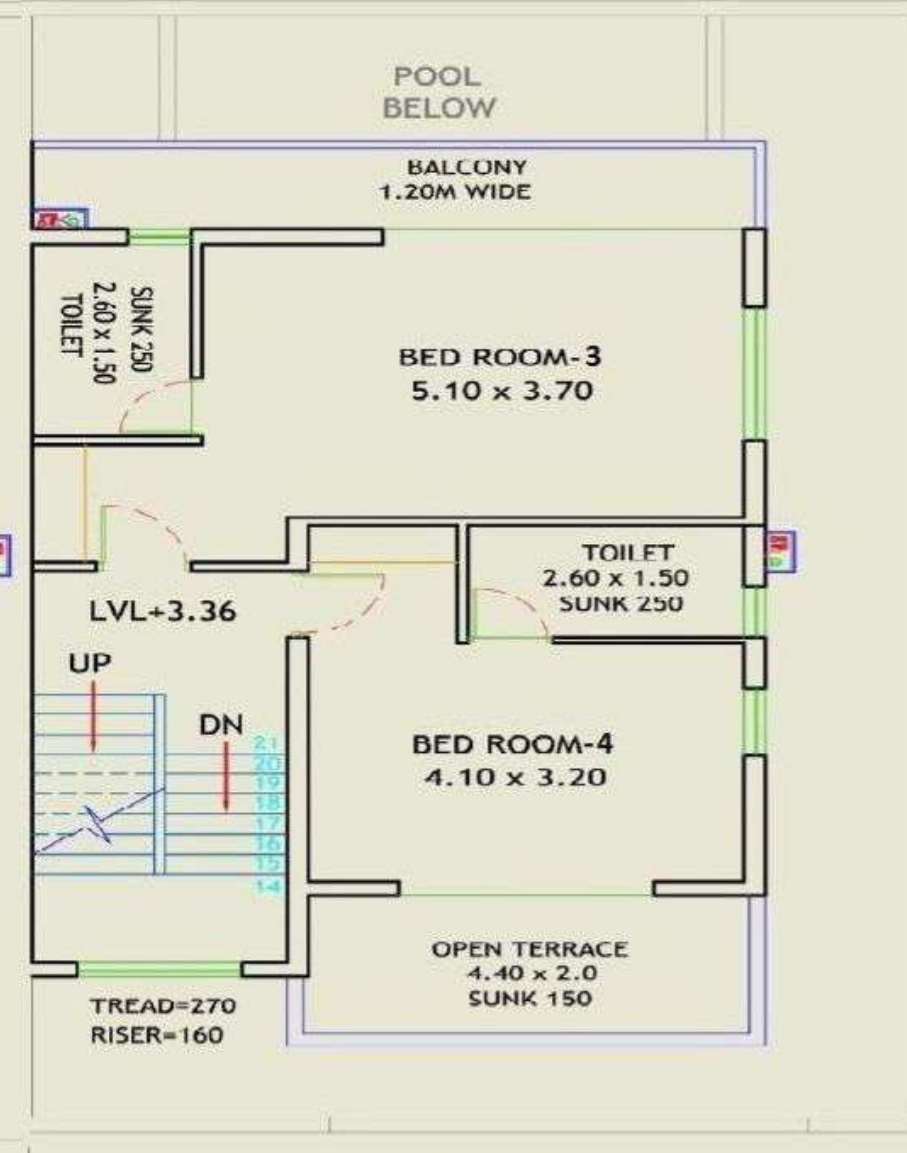
218.60 Sq.Mtrs / 2353 Sq.Ft



GROUND FLOOR PLAN



FIRST FLOOR PLAN



SECOND FLOOR PLAN

\*Subject to change as per the final measurement at the time of final offer of possession.



DAY VIEW



Street Veiw

This is an artists rendition and may undergo modifications.

# CLUBHOUSE



Swimming pool | Kids splash pool | Changing rooms |

Unisex gymnasium

Multipurpose hall | TV lounge | Tennis | Kitchenette

## AMENITIES





DAY VIEW

AMENITIES





# AMENITIES



# SPECIFICATIONS



## Bedroom

- Lighting fixtures & fan
- Gypsum plaster
- UPVC windows
- Terrazo tiles or equivalent



## Bathroom

- Lighting & fixtures
- UPVC windows
- Duco / Italian PU coated doors
- Antiskid / Terrazo floor tiles
- 8 ft. marble / tile height on walls
- Fitting of Jaguar / Kohler or equivalent



## Structure

- Water proof terrace / sundeck
- Raised plinth level
- RCC framed structure
- Internal walls of Laterite Stones
- ISI Grade iron bars for stronger structure
- External paint (Plastic Emulsion or equivalent)



## Balcony

- Antiskid tiles
- Spot LED lights & fan
- Iron grip of modern design
- Seepage protection treatment in balcony



## Kitchen

- Lighting & Fixtures
- Fittings of Jaguar or equivalent
- Granite counter
- Stainless steel sink
- UPVC windows
- Duco / Italian PU coated door



## Electrical

- Telephone wiring in living and Bedrooms
- High quality modern switches & protective MCBs
- Satellite TV / DTH wiring
- Copper wiring & PVC concealed conduit
- Sufficient light & power points
- Low consumption electricity lighting provision.



## Living fixtures & Fan

- Duco / Italian PU coated doors
- UPVC windows
- Terrazo floor tiles / Italian marble



## External

- Beautiful Landscaping
- Beautiful & relaxing sun decks near pool
- Electric vehicle charging points
- Proper Seepage treatment provision



## Swimming Pool

- swimming pool

